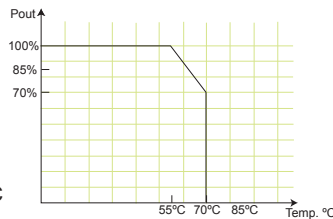


# IDD-12250A *50 W+60 W DC/DC Converter Module*



## Specifications

- Output (max.): 12 V@5 A (pass thru.), 5 V@10 A & 5 VSB@0.5 A  
Max. total output: 50 W plus 60 W (12 V pass thru.)
- Input: 12 VDC
- Performance characteristics  
Noise & ripple: <25 mV  
Load regulation: <120 mV  
Efficiency: Up to 90%
- Dimensions: 40 mm x 100 mm
- Weight: NW: 46 g
- Operating temperature: 0°C ~ 70°C



## PIN Assignments

### Input Power Connector

CN3	Pin 1	Pin 2	Pin 3	Pin 4
	VIN	VIN	GND	GND

### Output Power Connector

CN4	Pin 1	Pin 2	Pin 3	Pin 4	Pin 5
	+5 V	+5 V	GND	GND	+12V

CN1 CN2 CN5 CN6	Pin 1	Pin 2	Pin 3
	+5V	GND	+12V

### ATX Mode Connector

CN7	Pin 1	Pin 2	Pin 3
	5VSB	GND	PS_ON

## Wire Harness Selection Guide

### DC Input (CN3)

#### Options 1.

**PN: CB-P1LP4-RS**

Cable for FSP0601AD101C 60 W/  
UP0451E12P 45 W/UP0251E12PL  
25 W AC-DC adapter

#### Options 2.

**PN: CB-MD4P4-RS**

Cable for 63000-FSP120AAB-RS  
120 W AC-DC adapter

#### Options 3.

**PN: CB-NOLP4-RS**

Cable for terminal block

### I/O Power (CN1, CN2, CN5 & CN6)

#### Options 1.

**PN: CB-3PSATA-RS**

Cable for SATA

#### Options 2.

**PN: CB-3PIDE-RS**

Cable for IDE HDD or any STD 4  
pins I/O devices

### SBC Main Power (CN4)

#### Options 1.

**PN: CB-5PSBC-RS**

5-pin connector to DC/DC  
power modules CN4

12 V only connector for  
NANO series SBC

Cable for SATA HDD

Std 4-pin 12 V, 5 V  
I/O connector for WAFER,  
NOVA, Enano series SBC  
or I/O devices

### Power On/Off (CN7)

#### Options 1.

**PN: CB-JST3PSW-RS**

Cable with on/off switch

#### Options 2.

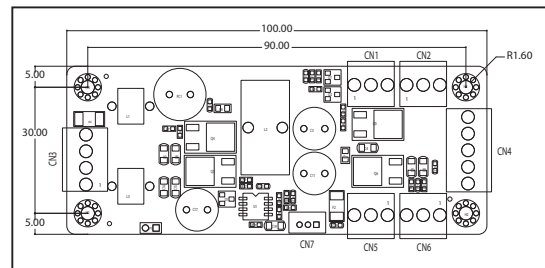
**PN: CB-JST3P001-RS**

Cable to SBC (5 VSB & PS\_ON)

## Features

- 50 W + 60 W (12 V Pass Thru) total power 110 W
- AT or ATX mode on/off
- Up to 90% efficiency
- RoHS compliant
- Compact size

## Dimensions (Millimeters)



## Packing information

1 x IDD-12250A

1 x QIG

## Ordering Information

Part No.	Description
<b>IDD-12250A-R10</b>	50 W+60 W DC/DC 12 V input; 12 V, 5 V & 5 VSB output
<b>CB-5PSBC-RS</b>	20 cm cable to SBC power input
<b>CB-JST3PSW-RS</b>	30 cm cable on/off switch
<b>CB-JST3P001-RS</b>	30 cm 5 VSB, PS_ON wire to SBC
<b>CB-3PSATA-RS</b>	10 cm cable for SATA power
<b>CB-3PIDE-RS</b>	10 cm cable for IDE HDD power
<b>CB-P1LP4-RS</b>	20 cm cable for FSP0601AD101C 60 W/ UP0451E12P 45 W/UP0251E12PL 25 W AC-DC adapter
<b>CB-MD4P4-RS</b>	20 cm cable for 63000-FSP120AAB-RS 120 W AC-DC adapter
<b>CB-NOLP4-RS</b>	20 cm cable for terminal block DC input

1  
Application  
Server  
Platform

2  
Single  
Board  
Computer

3  
iBX Series  
POS PC

4  
AFOLLUX  
POS  
Panel PC

5  
Video  
Capture  
Card

6  
KAMIO  
RISC

7  
IOVU  
Open HMI

8  
VITO  
Universal  
Controller

9  
DINO  
BLADE

10  
LCD  
Product  
Series

11  
Embedded  
System

12  
Industrial  
Computer  
Chassis

13  
Power  
Supply

14  
Peripherals